



TO LISTEN TO INTERPRET AND  
ULTIMATELY TO CREATE THE MOST  
EFFICIENT, UNIQUE AND INSPIRING  
ENVIRONMENT FOR OUR CLIENTS.

OUR EXPERIENCED STAFF INVITES

THE OPPORTUNITY TO UTILIZE OUR

CREATIVE SKILLS TO MAXIMIZE THE

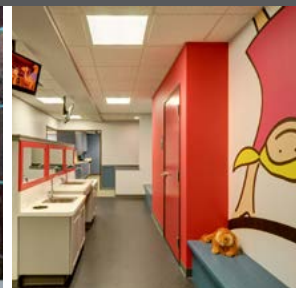
FACILITY DOLLAR WHILE BRINGING

FRESH AND ENERGETIC DESIGN

IDEAS TO EACH PROJECT.

## HOW WE'RE DIFFERENT

- Experienced senior level designers work with you all the way from start to finish.
- We make the whole design process a collaborative event – our clients are a member of our design team.
- We are judicious with the client dollar, looking for the largest impact for the least dollars spent.
- We are very responsive and work quickly and efficiently.
- We possess a working knowledge of building codes and ADA guidelines.
- We are not afraid to take the road less travelled – using innovative materials and color palettes.
- We make the design process a FUN experience.



A headshot of Carol Holley, a woman with short blonde hair, wearing a black blazer with a red collar and a necklace. She is smiling at the camera.

**Carol Holley, ASID**  
*Principal*

As a seasoned veteran in contract interior design and space planning, Carol has enjoyed a diverse array of experience. Prior to founding Interior Design Group in 1986, Carol gained a BA in Interior Design from Purdue University, worked for several architectural firms, and served as a facilities designer for Texas Instruments and Republic Bank. This varied background has enabled her to understand the design process from both the owner and designer's perspectives. Carol's recent projects include Pratt & Whitney DARO - Lobby, Museum and Conference Room, Family Medical Center in Lampasas, Tarrant County Northeast Sub-Courthouse FF&E, Texas Trust Credit Union Corporate Headquarters Building. Carol has enjoyed her long-term residence in Tarrant County, having relocated from Dayton, Ohio in 1976. She shares her office and home with her two K-9 companions, Jacque and Bella.

#### **Professional Affiliations and Registration**

Professional Member, American Society of Interior Designers  
Certified by the National Council for Interior Design Qualification  
Registered Interior Designer, State of Texas – Cert. No. 1364  
Member, Commercial Real Estate Women (CREW)

#### **Education**

Bachelor of Art in Interior Design Purdue University  
Fundamentals of Lighting Design IES, Dayton, Ohio

NCTRCA Certification No.: WFSD2776N1093  
HUB Certification No.: 2296448509200

A headshot of Mary Beth Clark, a woman with short blonde hair, wearing a white top. She is smiling and looking slightly to the side.

**Mary Beth Clark**  
*Senior Designer*

Mary Beth began her professional career in commercial and retail interior design and has brought over 34 years of experience to Interior Design Group. Her expertise includes all phases of design and construction. She has participated in a diverse range of project types including, corporate, institutional, medical, cinema, and, retail - including specialty vendor shops, specialty stores, and mass market department stores.

Since joining Interior Design Group she has worked on various projects including; McKinney IESI Recycling Education and Training, Pratt & Whitney lobby renovation, ATI Career Center, Daired's Salon, International Plaza common area upgrade, Dr. Angela Bowers' Offices, Fort Sam Houston Dormitories and Dining Hall, Brookhaven Community College student cafeteria renovation, and University of Texas Arlington Ransom Hall and Trust Credit Union Corporate Headquarters Building.

After moving to Texas in 1981, Mary Beth calls Midlothian home. She shares her abode with her husband, Scot, and their cat, Jill.

#### **Professional Affiliations and Registration**

Certified by the National Council for Interior Design Qualification  
Registered Interior Designer, State of Texas Cert. No. 10472

#### **Education**

Bachelor of Fine Arts in Interior/Environmental Design  
Ball State University





## OUR STUDIO

*Arlington, Texas* High atop a wooded hill in Arlington is our IDG studio. The space allows for wonderful natural light, as well as an inspiring view of tree tops. The open design office with its expanse of lay-out space, lends itself to teamwork and collaboration.

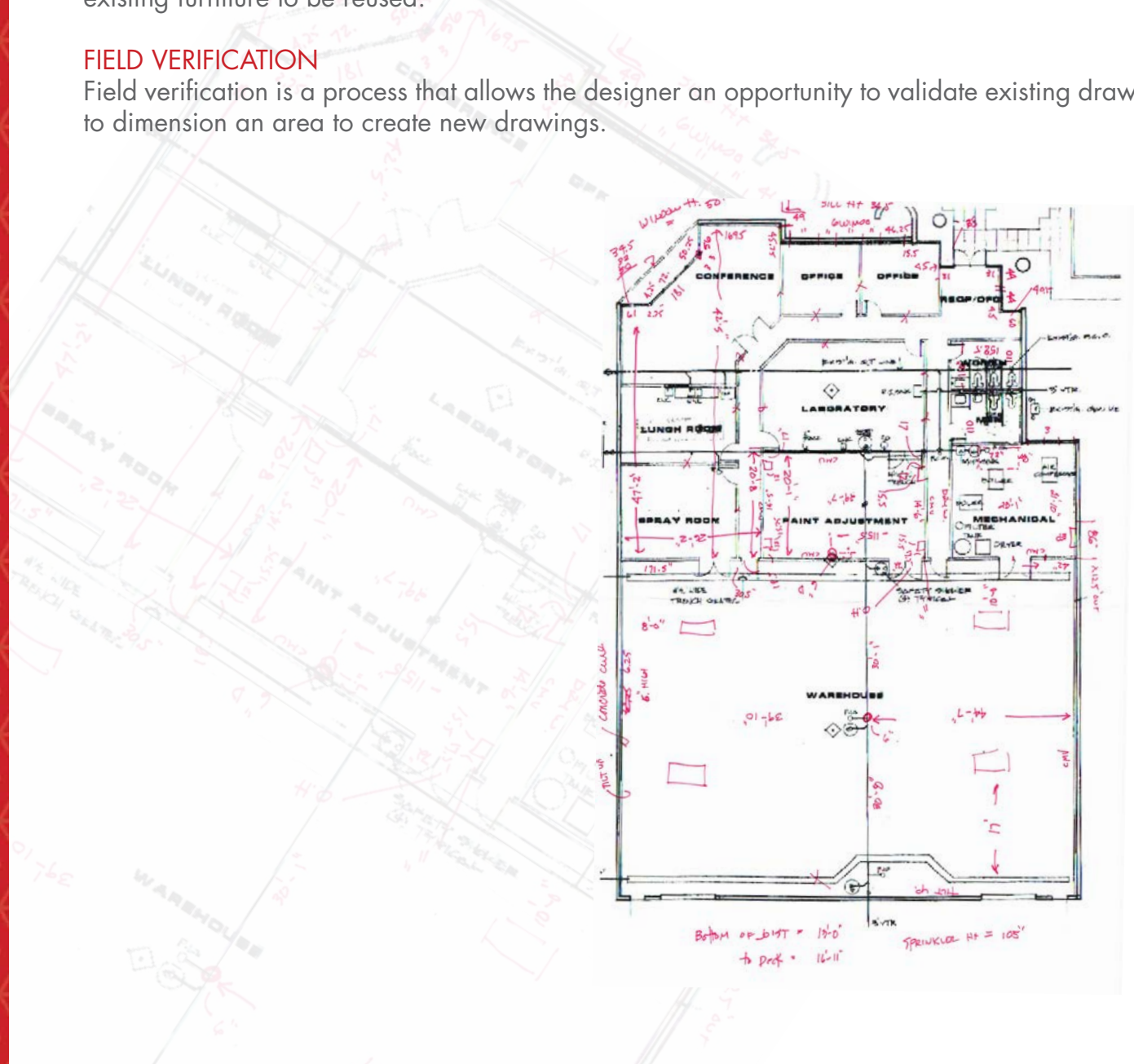


●○○○○ PROGRAMMING PHASE

We consider this beginning phase the most important as the success of the project is dependent on how well we listen to our clients needs and requirements. In this initial meeting, we obtain clients' space requirements, functional adjacencies, furniture needs and aesthetic desires. In addition, we photographically record the existing space, and inventory and measure all existing furniture to be reused.

## FIELD VERIFICATION

Field verification is a process that allows the designer an opportunity to validate existing drawings or to dimension an area to create new drawings.

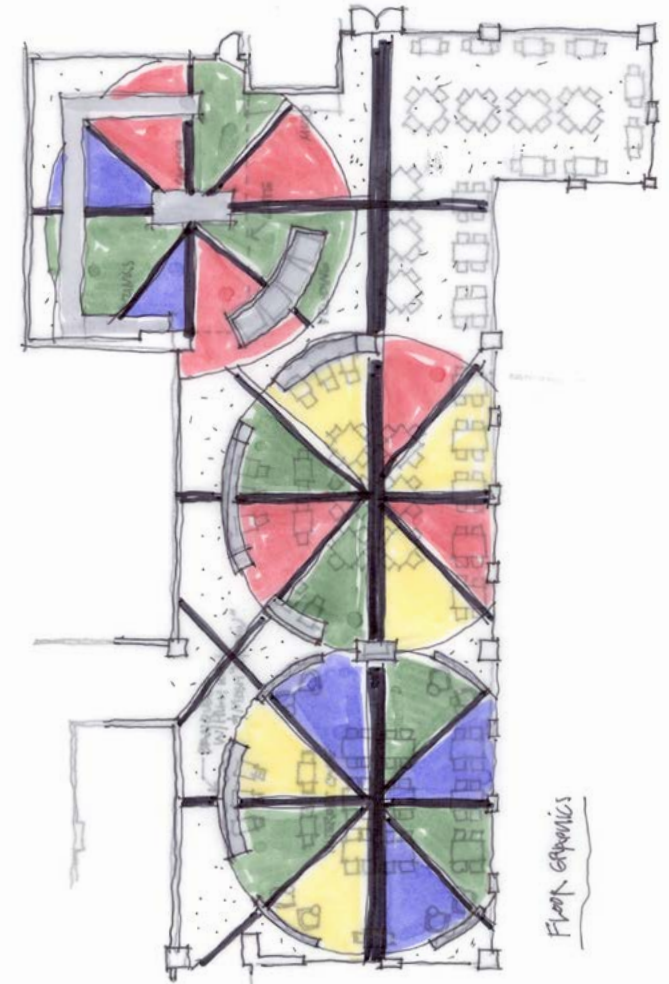


## ●●○○○ SCHEMATIC DESIGN

During this phase we establish an overall design concept. After recording or modifying “as-built” drawings we utilize the program information to develop stack or block plans, which graduate into preliminary space plans. Adhering to the client’s desired image we create finish and material palettes.

### HAND SKETCHING

Quick hand sketches allows for both the designer and the client to visualize initial design concepts in the schematic design phase.





## ●●●○○ DESIGN DEVELOPMENT

During this phase, we revise and finalize the space plan and develop major design elements. We select the finishes and materials. We further define the lighting to enhance the architectural features of the space, while remaining cognizant of the energy codes. We investigate way-finding to facilitate the traffic flow through the space. To aid in visualizing the space, we provide plans, elevations and three-dimensional sketches.

### SKETCHING

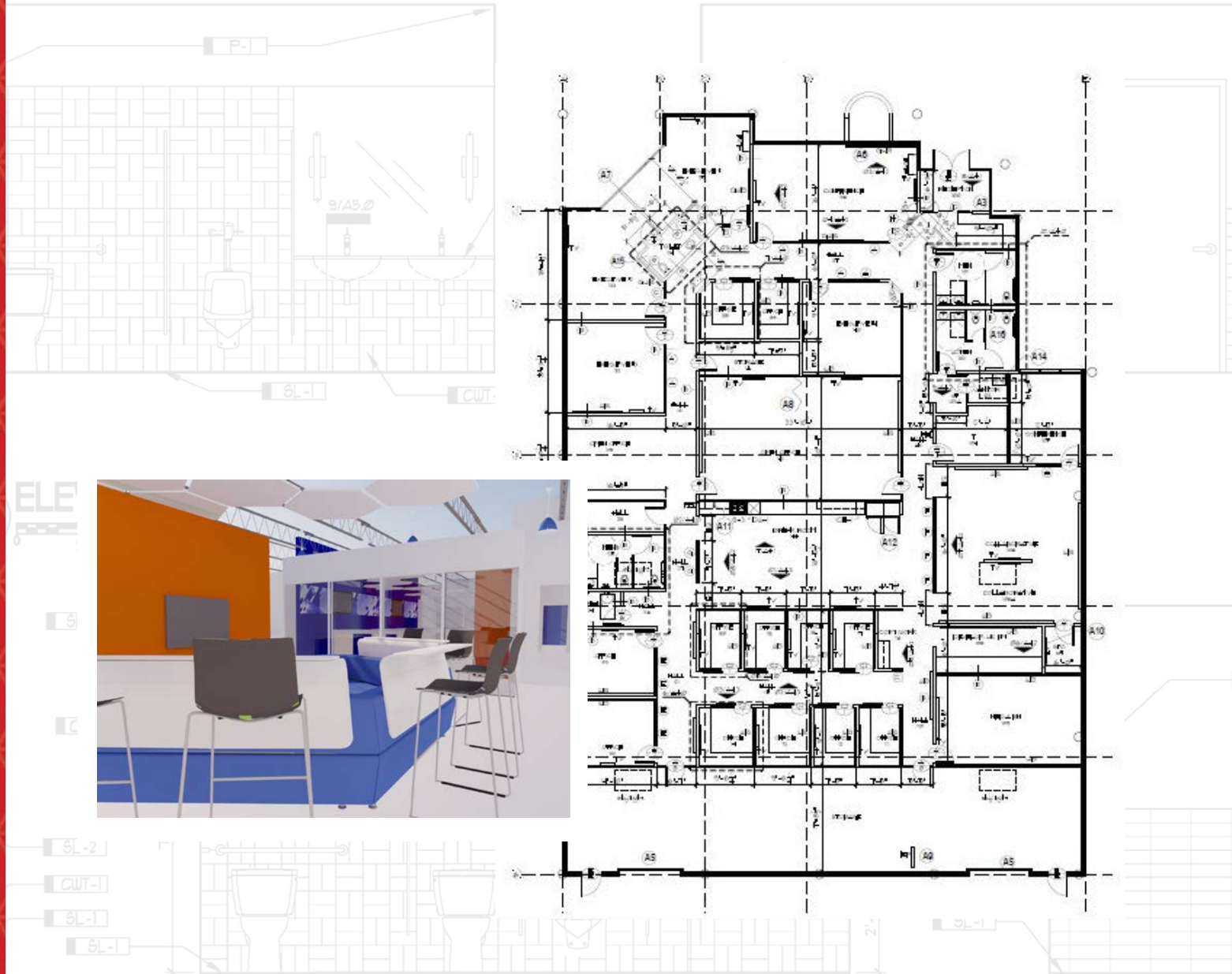
Sketches in the design development phase serve as a visualization tool for both the client and the designer to evaluate the proposed design concept, show wall and cabinet details, and show furniture layouts.



## ●●●●○ CONSTRUCTION DOCUMENTS

Construction drawings include demolition, construction, power, reflected ceiling, millwork details, and finish schedules. Coded furniture plans are assembled. If the scope includes the procurement of furniture, art and plants, bid specifications are assembled.

The final drawing and design phase showing every detail from light fixture placement, finish selections and locations and architectural details.





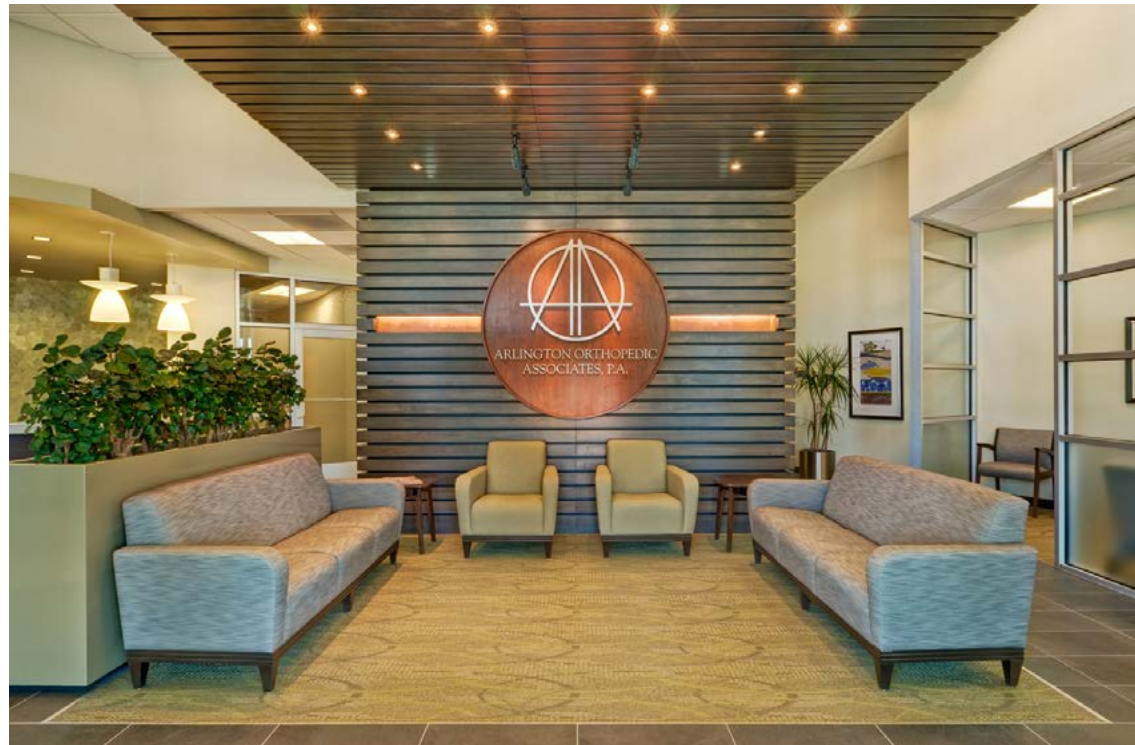
## ●●●●● CONSTRUCTION ADMINISTRATION

**Bid Negotiation:** Depending on the complexity of the project, a pre-bid conference might be conducted. During this meeting, we answer questions and clarify any ambiguities and issue addenda. Upon receipt of bids, we analyze and recommend the award of contracts.

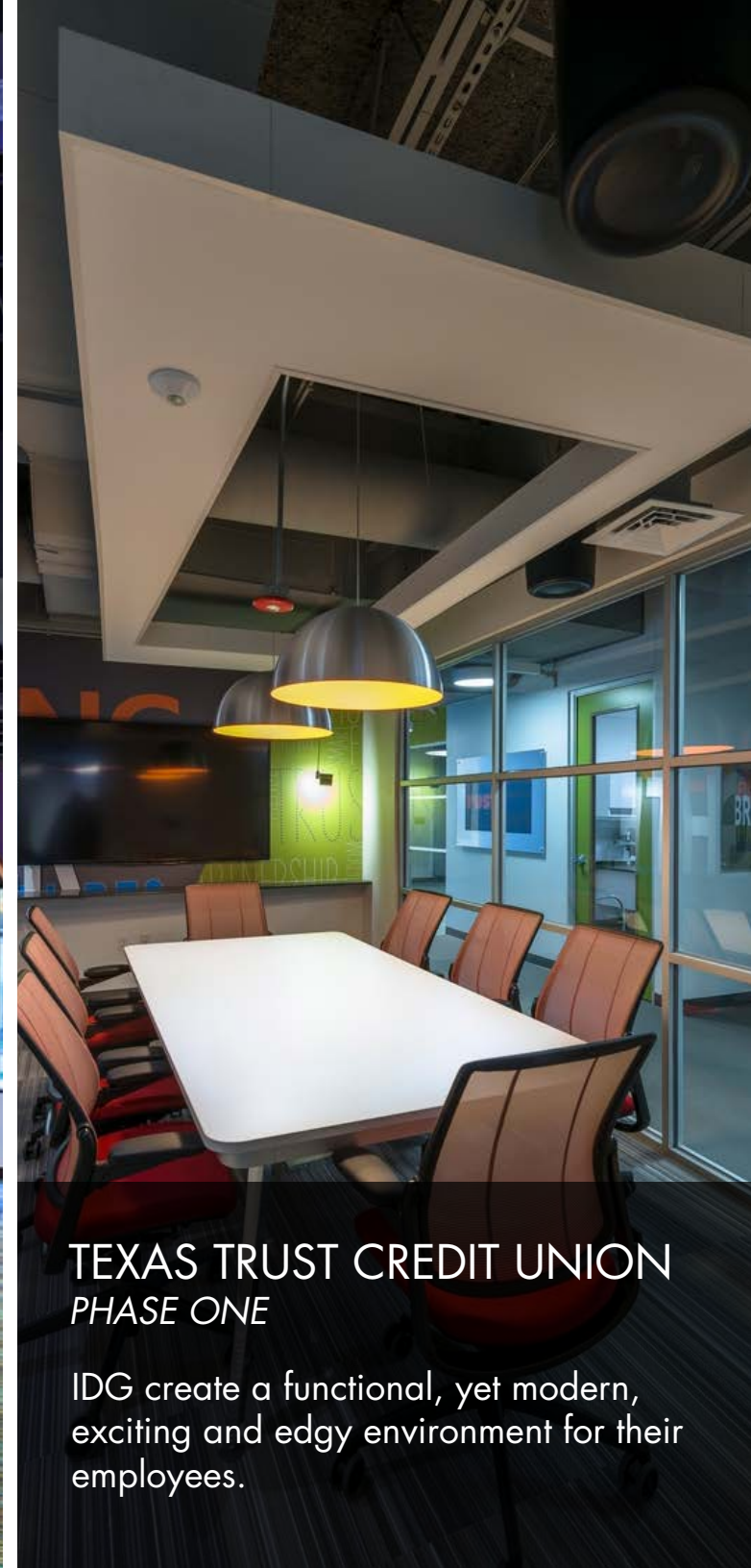
**Contract Observation & Administration:** During this phase, we attend project meetings as required, answer contractor questions, review shop drawings, and provide a punch list at the project's conclusion.

## PROJECT CLOSEOUT

At the end of a project, Interior Design Group completes a project with a punch list noting issues that need to be corrected before a project can be closed out. Photographing a successful project completes the process.







## TEXAS TRUST CREDIT UNION PHASE ONE

IDG create a functional, yet modern, exciting and edgy environment for their employees.





## TEXAS TRUST CREDIT UNION PHASE TWO

IDG carried the previously established colorful scheme and branding into the Executive Area.





## TEXAS TRUST CREDIT UNION PHASE THREE

IDG invented an "offical" – combining the footprint and openness of a cubicle with the acoustical privacy of a private office.





## TEXAS TRUST CREDIT UNION PHASE FOUR

IDG created a corridor with travelling bands of light to reflect the client's dynamic corporate culture.





## TEXELL CREDIT UNION NEW BRANCH PROTOTYPE

In a focus group, involving a group of employees, the request was to "not look like a traditional bank", "cutting edge design", "industrial chic"...

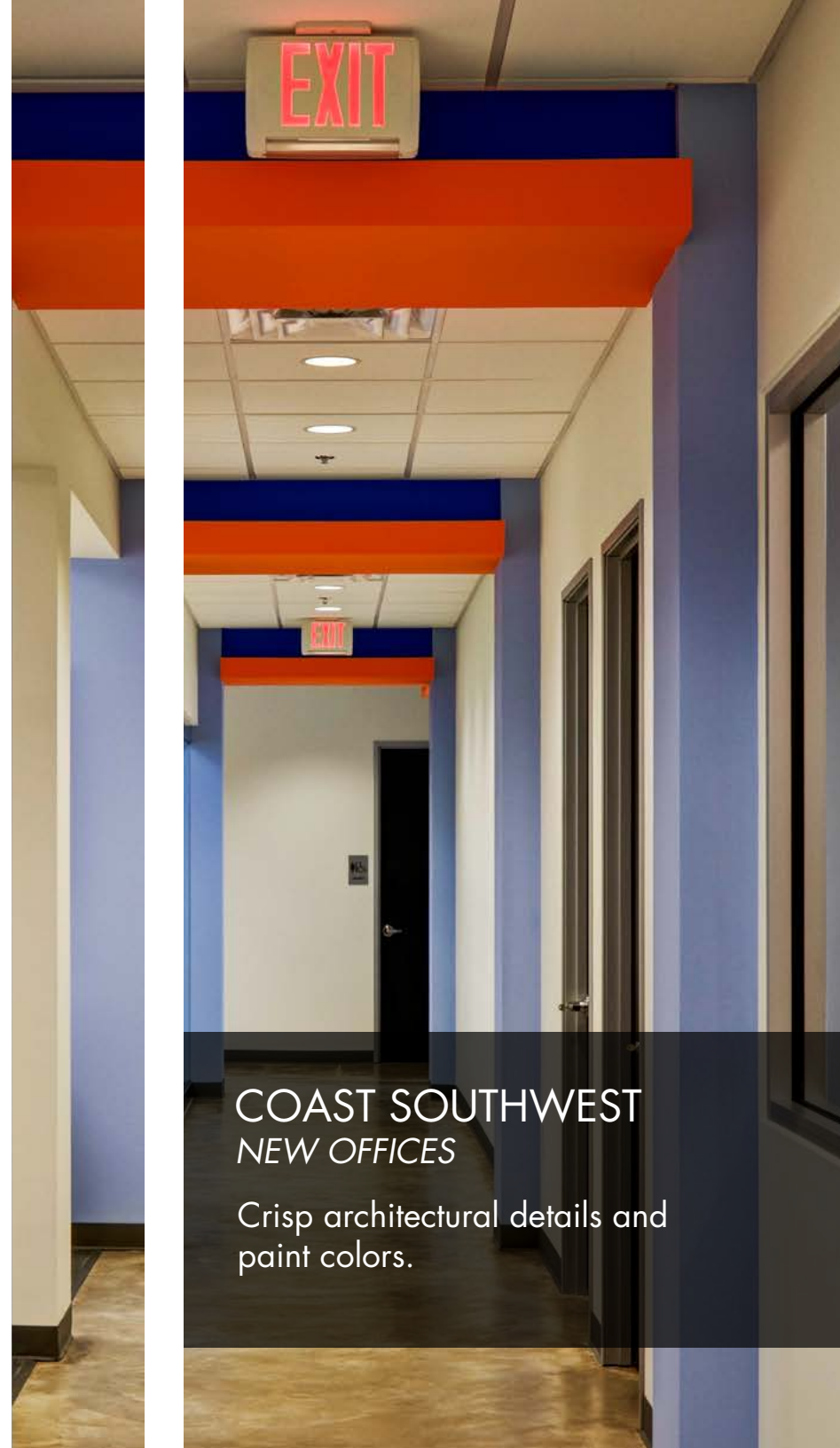






## OVERALL PARTS SOLUTIONS *SHELL SPACE RENOVATION*

Interior Design Group took OPS's directive to create an open, industrial space with several collaborative teaming spaces.



COAST SOUTHWEST  
NEW OFFICES

Crisp architectural details and  
paint colors.





IMCO  
LOBBY RENOVATION

Transformation from existing hard  
edge modern lobby into a warm,  
transitional space.

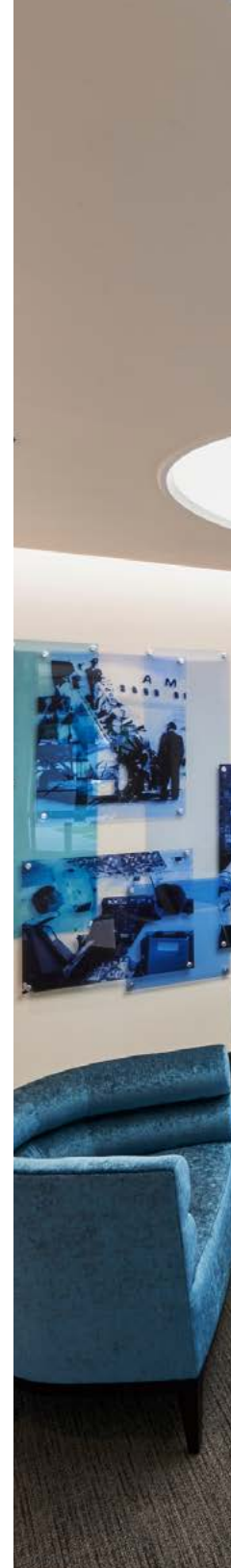




## SCM REAL ESTATE OFFICES *HISTORIC RENOVATION*

Historical building - vintage Chevy hubcaps, framed them with rods and cables.





## ALLIED PILOTS ASSOCIATION RENOVATION

The bones of the space were good:  
beautiful reception desk, a custom  
patterned terrazzo floor...

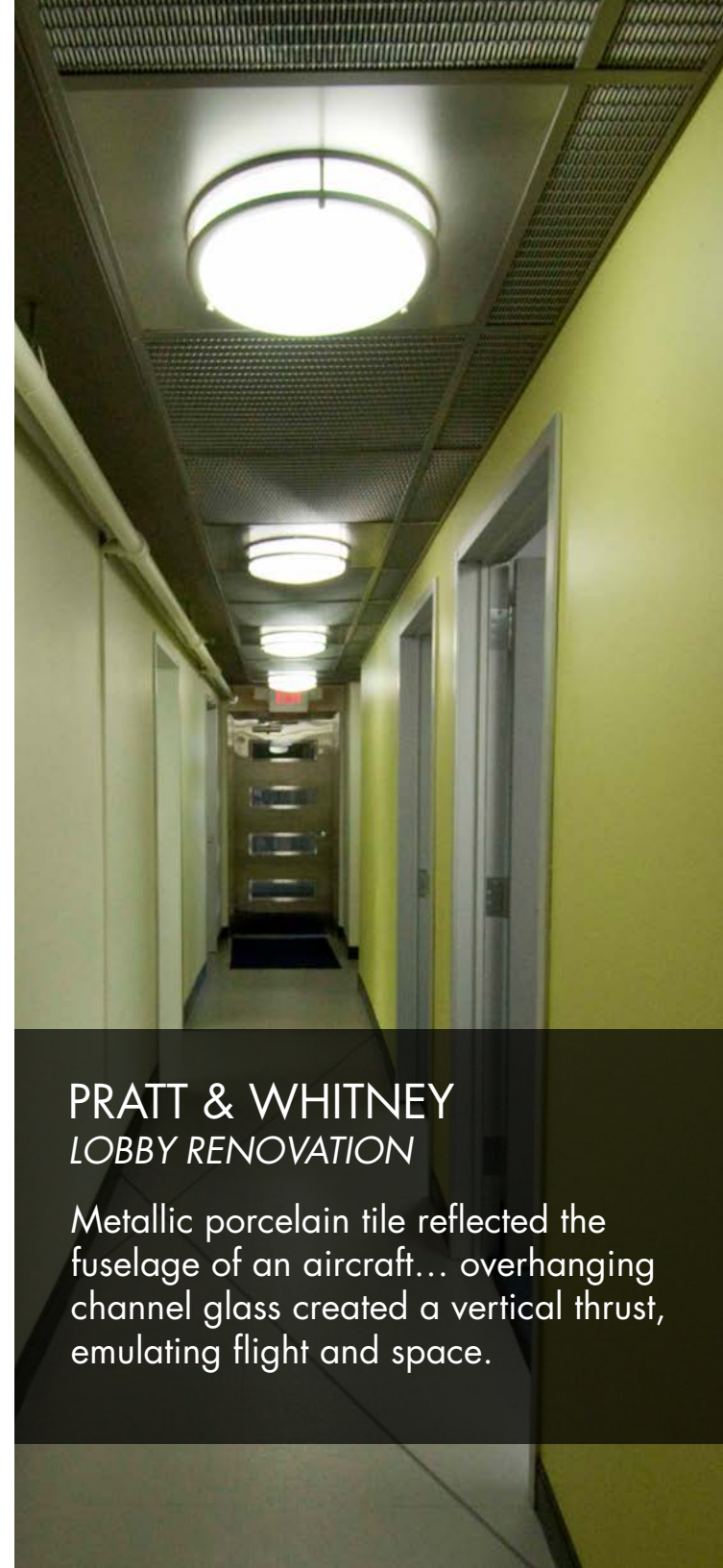




## INTERNATIONAL PLAZA RENOVATION

IDG created environments which enhanced the classical modern line of the architecture.

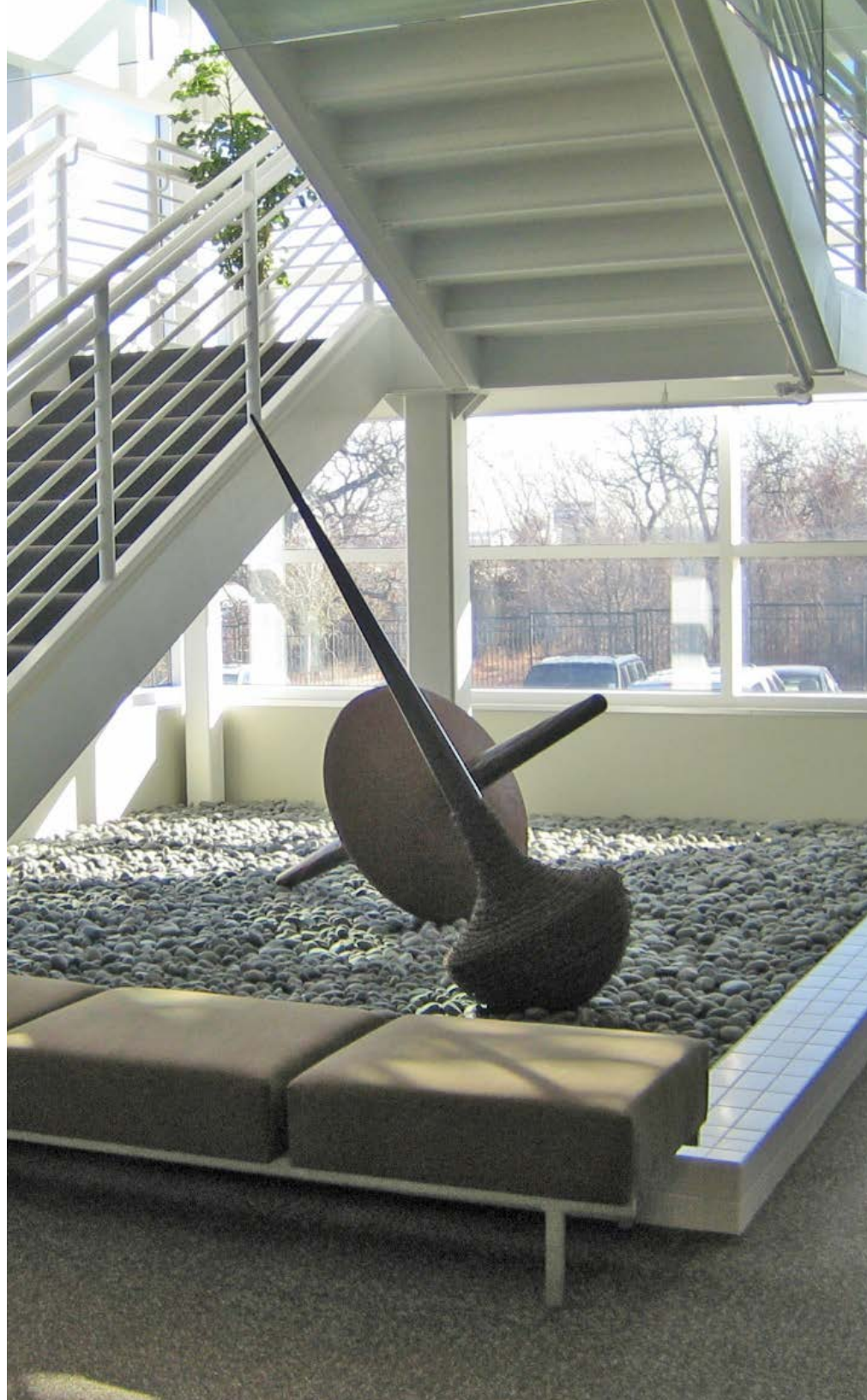




## PRATT & WHITNEY LOBBY RENOVATION

Metallic porcelain tile reflected the fuselage of an aircraft... overhanging channel glass created a vertical thrust, emulating flight and space.

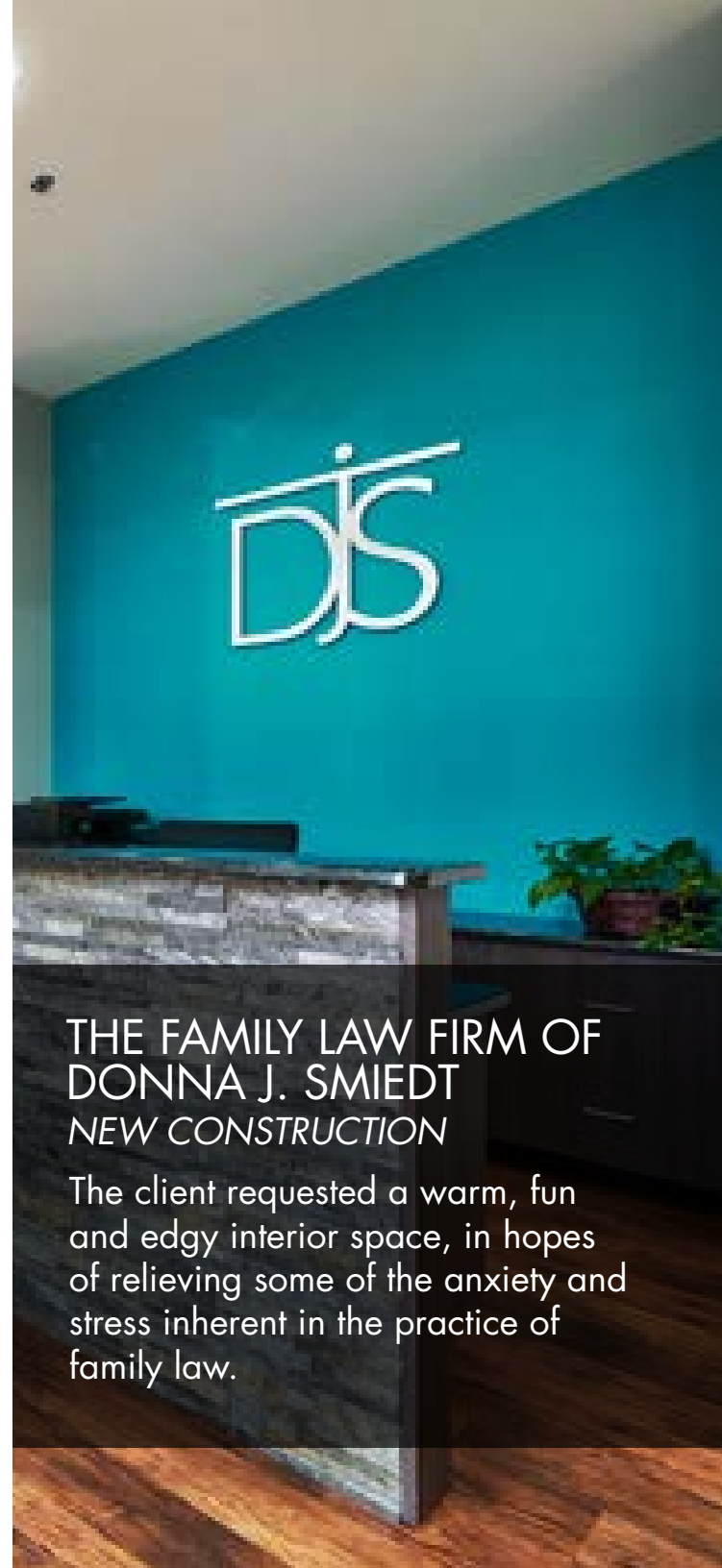




## STATE NATIONAL INSURANCE *TENANT RETAIL SPACE*

One supersized graphic in a large atrium space symbolized the rapid growth of the company.





THE FAMILY LAW FIRM OF  
DONNA J. SMIEDT  
*NEW CONSTRUCTION*

The client requested a warm, fun and edgy interior space, in hopes of relieving some of the anxiety and stress inherent in the practice of family law.



## DR. DEBORAH LOTH ENDODONTIC OFFICE

The selection of a custom cowhide rug, wall hanging and a large western painting reinforced the urban cowboy mystique.







**BAYLOR MEDICAL  
TROPHY CLUB**

...an elegant, relaxing, hospitality-like  
space.





ANGELA BOWERS, M.D.  
*DERMATOLOGY OFFICE*

A soft, spa-like space with organic materials...

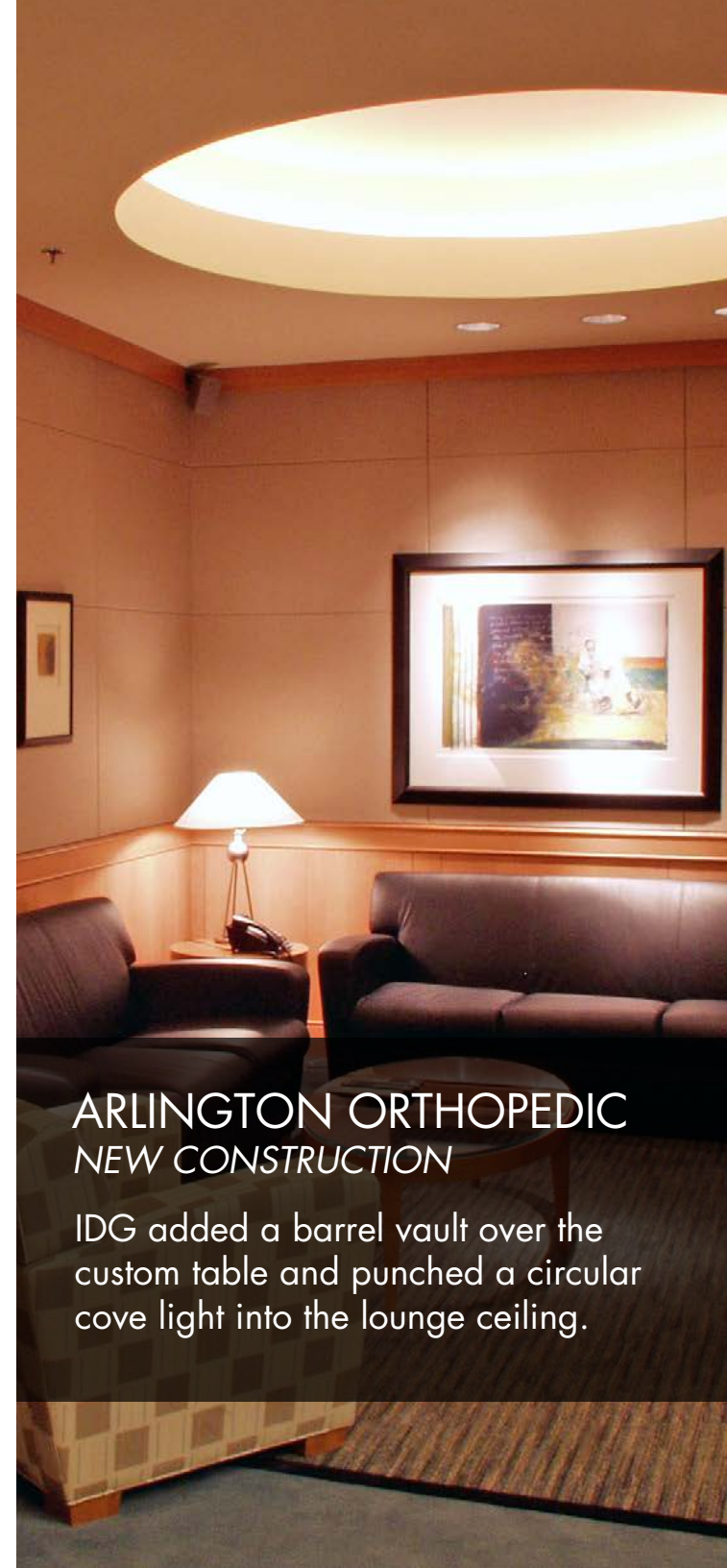




## ARLINGTON ORTHOPEDIC NEW CONSTRUCTION

IDG used earthy, relaxing colors to create an almost spa like patient experience.





## ARLINGTON ORTHOPEDIC NEW CONSTRUCTION

IDG added a barrel vault over the custom table and punched a circular cove light into the lounge ceiling.





## F.W. CHILDREN'S DENTISTRY REMODEL

The designers created fun graphic walls and selected colorful finishes to appeal to the youthful clientele.





## SPRADLEY ORTHODONTICS RENOVATION

The client requested a leading edge look ... operatories with bright colorful interiors.





## DAIREDS' SALON & SPA RETAIL RENOVATION

...a giant wall graphic using the client's logo... reinforced the branding and visually lowered the two-story space...







## DARIED'S SKYLINE NEW CONSTRUCTION

The designers employed dimensional, stylized floral wall panels, graphic botanical wall-coverings and mesh draperies to impart an exotic and open feel to the space.





## BABY DRAGON RENOVATION

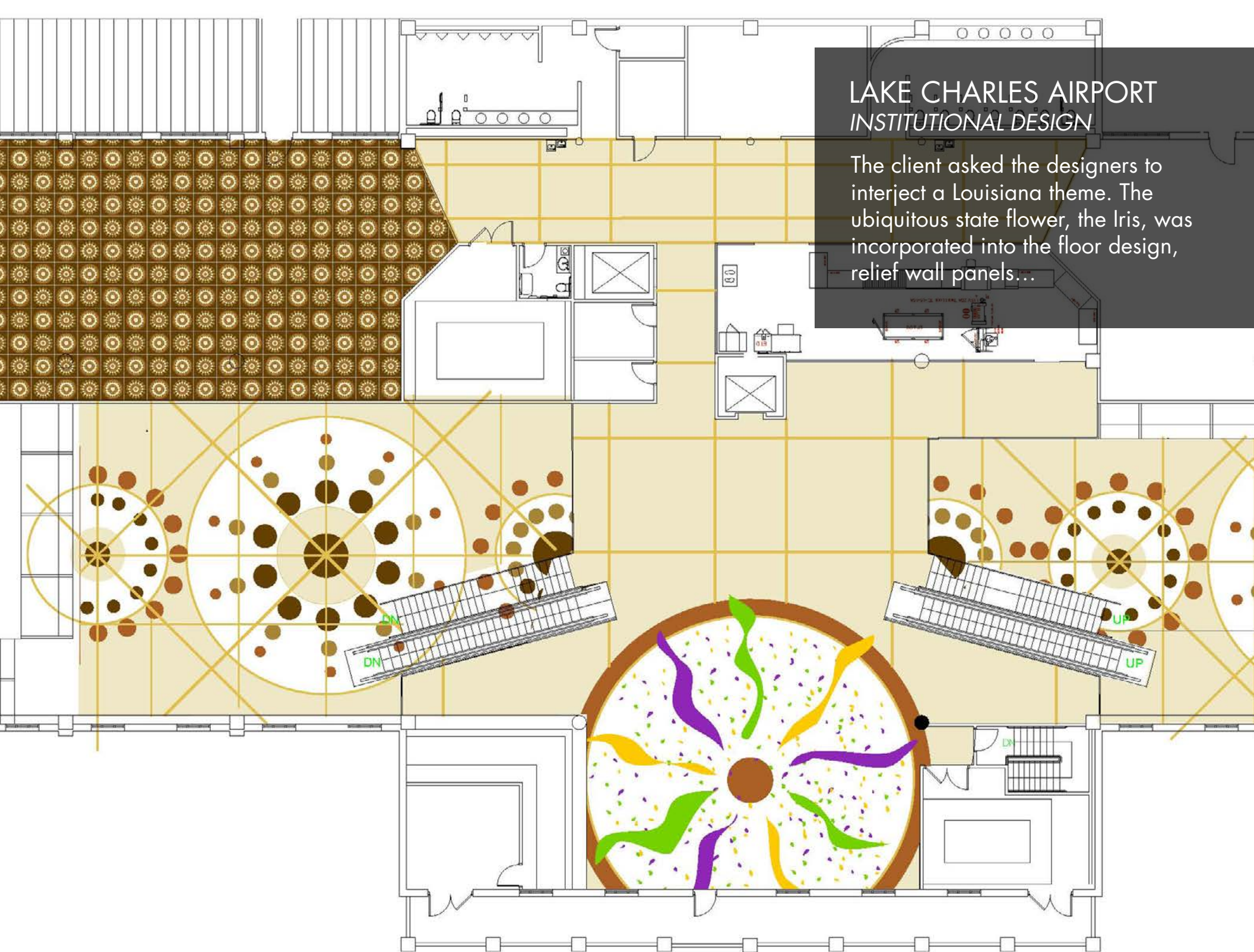
...IDG consciously avoided rich-looking materials that might deter the target customer base...





## LAKE CHARLES AIRPORT INSTITUTIONAL DESIGN

The client asked the designers to interject a Louisiana theme. The ubiquitous state flower, the Iris, was incorporated into the floor design, relief wall panels...





From the inception of vision and space planning design, to the furnishings and accessories, Mary Beth not only met, but exceeded our expectations!

– Fred Spradley, DDS, MSD, PA  
Spradley Orthodontics Fort Worth, Texas

Thanks for all your teams' hard work on this project. It turned out exceeding our expectations. Thanks!

– Bryan Sims  
University of Texas Arlington

Mary Beth and Carol did a tremendous job creating a space that we will enjoy for many years to come. They have truly been a joy to work with!

When we moved into our new space, we had employees break down and cry because it was such a tremendous improvement to their working environment.

– Jim Minge, CEO  
Texas Trust Credit Union

...IDG has a special capacity for providing excellent solutions to challenging design problems in a manner which is timely and affordable....

– James R. Nader, FAIA,  
Nader Design Group

"I love to be able to allow creative talent to create and to not set boundaries. Some design firms like IDG are comfortable with that role; I always look forward to see what they will create!"

– Fran McCarthy  
Property Manager  
Fort Worth, Texas

KU **idg** **OS**



2307 OAK FOREST COURT  
ARLINGTON, TEXAS 76012  
817.469.1171  
817.469.9155  
[www.idgfw.com](http://www.idgfw.com)

idg